

MARCH 2012



# Wahíawa Hongwanji Mission

Phone: 808.622.4320 ✱ Mon-Fri 8 am to 12 noon ✱ email: [office@wahiawahongwanji.org](mailto:office@wahiawahongwanji.org)  
Website: [www.wahiawashinbuddhists.org](http://www.wahiawashinbuddhists.org)  
President: Mr. Glenn Hamamura ✱ Minister:

## ***OHIGAN (THE OTHER SHORE) ENLIGHTENMENT***



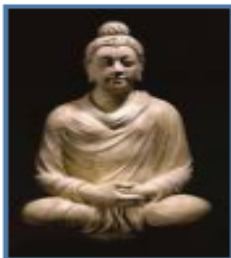
Ohigan Services are held during the Spring and Fall equinoxes, when the days and nights are of equal length, and are neither too hot nor too cold. The following is a traditional poem about Ohigan, which, as you know, means “the Other Shore (enlightenment)”.

The day of Ohigan  
What a fine time  
To plant Seeds  
Of enlightenment

For all Buddhists, the most pleasant times during the spring and fall are when services are held to “move to the Other Shore” (to-higan). It is a time when we are encouraged to strive even

more energetically along the Buddhist path and strive to become enlightened.  
Our Spring Ohigan service will be on March 11, 2012.

### **Thought For the Day**



“  
Sometimes your joy is the source  
of your smile, but sometimes your  
smile can be the source of your joy.  
~ Thich Nhat Hahn.

”





**WHM  
BOARD OF TRUSTEES**

**PRESIDENT**  
Glenn Hamamura

**PAST PRESIDENT**  
Yukio Kitagawa

**VICE PRESIDENTS**  
Carolyn Uchiyama, 1st  
Dale Shimauro, 2nd  
Rod Moriyama, 3rd

**RECORDING SECRETARY**  
Arlene Ogata

**TREASURER**  
Alan Kakazu

**ASSISTANT TREASURERS**  
Richard Adaniya  
Stanley Murakoshi

**TRUSTEES**  
Damon Bender  
Elaine Kawamoto  
Brian Kimura  
Barbara Ladao  
Yoshio Nakagawa  
Alfred Paulino  
Calvin Takeshita  
Neal Tomita  
Jack Tsujihara  
Vernon Yamamoto

**LEGAL ADVISORS**  
Yoshiro Nakamura  
Marcus Oshiro

**ADVISORS**  
Sonny Abangan  
Shuichi Nagai

**CLUB PRESIDENTS**  
Roseline Yano, BWA  
Aki Kakazu, Club Asoka  
Carolyn Uchiyama, Dharma School  
Rusty Nakagawa, Project Dana



WHM newsletter is published by  
friends of the Dharma. Volunteers are  
welcome to serve on the committee.  
Please send comments and change of  
address to WHM office or email at  
[news@wahiawahongwanji.org](mailto:news@wahiawahongwanji.org).  
Roy Higa, Editor



# President's Message

Glenn Hamamura

**MARCH 2012**

Wahiawa Hongwanji was represented at the Giseikai (Hongwanji Legislative Assembly) by many of our volunteers on February 3 and 4, 2012. The Giseikai was held at the Honpa Hongwanji Mission of Hawaii on Pali Highway in Honolulu. I would like to thank those who attended, and supported all of us, as well as heard the current issues that face our temples.

A major resolution of the 2012 assembly was salary standardization for ministers. The first steps of this resolution establish a central location for processing minister salaries, as well as continuing towards a standard schedule for salaries based on years of service. In addition, work towards a temple effectiveness model and minister effectiveness process will continue. Wahiawa will participate in this effective model effort as well, as possibly one of the pilot temples in 2012.

At the Living Treasures luncheon held on Saturday (you may have heard about this on the local news, it is an event sponsored by the Hongwanji), one of Wahiawa's members, Barbara Kawakami, was honored as a Living Treasure of Hawaii in 2012.

Other updates. We have continued to operate without a resident minister with the support of the other ministers of the Oahu district, and I have maintained a dialogue with the Bishop regarding a replacement for our temple. Key religious activities, including memorial services, are being held with the support of the Oahu district ministers, and have been well accepted. Dale Shimauro has led the effort to ensure that the services are scheduled, and has established a procedure to greet the families, and the minister as they arrive for the service. In the interim, let us continue to work together to maintain the services of the temple for all members. And if you are a member and want to volunteer to support our transition phase, please call the office. I believe that there is a tremendous growth opportunity for those who volunteer, in an understanding of our temple operations, and our religion.

Thanks to our volunteers' help in December at our fund raisers (mochi and kadomatsu), we grossed in excess of \$7,000 for mochi, and almost \$4,000 for kadomatsu. These fund raisers have helped us in keeping the minimum member dues stable for more than a decade.

Finally, we are beginning the renovation of the minister's residence. This transition period provides us the time to inspect, repair, and renovate the home. We have many volunteers working on this, but I would like to acknowledge the support of Calvin Takeshita, Alfred Paulino, and Luanne Bongiorno who are serving in leadership positions or as consultants for this effort. I would like to have this team consider the following vision in regard to our work: first, to renovate the residence to a quality that we would be proud of, that represents our best wishes for a comfortable home for our minister and family, and second, to invest in renovation with a view towards the longer term, to last for at least a decade, or longer.

In Gassho,

Glenn Hamamura

# Dharma Talks

By Rod Moriyama

## Attachments

It's 7:34 PM and the phone rings interrupting our dinner. My wife answers the phone and says, "Hi Sweet!" It's our grandson calling.

"Good night Nana...love you!" Our grandson, Jason, is at such a cute age. The joy of the moment is so wonderful. How long will we still enjoy his innocence and honesty? We can already see that as he turned 3, his independence and his "contrariness" are more pronounced. We know that this cute age will pass. His total enjoyment of his trucks, trains and bull dozers will be a memory in a few short years.

Sounds of children squealing with delight over bubbles being blown or just playing together... how precious these moments are! How does this apply to the concept of Non-attachment?

Reverend Gyomay Kubose in Everyday Successes writes:

*"Non-attachment is one of the very important teachings of Buddhism. In fact, the life of Enlightenment is the way of non-attachment. Most of life's troubles are caused by attachment. We get angry, worry, become greedy, complain ignorantly, and have all sorts of complexes. All of these causes of unhappiness, tension, stubbornness, and sadness are due to attachment."*

I notice that occasionally I think about a time when I can't enjoy Jason's giddy delights because he will change too. In my memory, I've etched my own son's laughter as he tricked his younger sister and cousin into one of our bedrooms and closed the door on them causing them some consternation. Is that attachment? To let that thought of change in that person disturb the pleasure of this current moment of joy is probably what "attachment" is all about.

Kubose writes:

*"When the sun shines, enjoy it; when it rains, enjoy it. All things in life, let them come and let them go. This is the secret of life that keeps one from getting upset or being neurotic. The Buddha says that all things in life and in the world are in constant change, so do not become attached to them."*

In gassho,

Rod Moriyama

## Life without Attachments

There once was a woman who woke up one morning, looked in the mirror, and noticed she had only three hairs on her head. "Well," she said, "I think I'll braid my hair today." So she did and she had a wonderful day. The next day she woke up, looked in the mirror and saw that she had only two hairs on her head. "H-M-M," she said, "I think I'll part my hair down the middle today." So she did and she had a grand day. The next day she woke up, looked in the mirror and noticed that she had only one hair on her head. "Well," she said, "today I'm going to wear my hair in a pony tail." So she did and she had a fun, fun day. The next day she woke up, looked in the mirror and noticed that there wasn't a single hair on her head. "YEA!" she exclaimed, "I don't have to fix my hair today!" Attitude is everything. Be kinder than necessary, for everyone you meet is fighting some kind of battle. Live simply, Love generously, Care deeply, Speak kindly, Leave the rest to Amida Buddha. Life isn't about waiting for the storm to pass ... It's about learning to dance in the rain.



## Reflection and Encouragement on the Occasion of the 100th legislative Assembly

Bishop Eric Matsumoto

Normally, the Office of the Bishop provides a reflection upon the past year's *events* and happenings; *however*, due to the significance of this year's Legislative Assembly in that it is the 100<sup>th</sup> Session instead a selection of some significant moments in our history are *provided* to refresh our memories of the path we have *traversed* and for our reflection as we look to the future.

The Honpa Hongwanji Mission of Hawaii, as we are known today, had its beginning on March 2, 1889, close to 123 years ago, when the Reverend Soryu Kagahi arrived in Honolulu. On the next day, according to our Centennial Commemorative publication, "A Grateful Past, A Promising Future, The First 100 Years of Honpa Hongwanji in Hawaii," *Anyone passing by Kojima Hotel at #1 Beretania Street in Honolulu the evening of March 3, 1889 would have heard sounds never before heard in the Kingdom of Hawaii. The clear sweet striking of a small gong. The sonorous rhythm of a sutra being chanted in Sino-Japanese. The first Shin Buddhist service in these islands was being held ...* Earlier in 1868, Japanese immigration to Hawaii had begun with a significant increase in immigration occurring in 1885. Reverend Kagahi having heard of the hardships and difficulties the immigrants were facing made a personal commitment to journey to Hawaii to see to their spiritual needs. Although, his first experiences were not encouraging *Rev. Kagahi persevered* and on March 15, 1889, only 13 days after he had arrived was able to conduct the first Wake/Otaiya Service in honor of Shinran Shonin with *seventy* people in attendance including Keigoro Katsura and Saiji Kimura who would play a pivotal role in the early years of our establishment in Hawaii. From early on the effort to fundraise for a large temple in Honolulu was undertaken. Jodo Shinshu followers on all Islands were solicited for donations and in the short time, less than 5 months, Reverend Kagahi was in Hawaii two temples were built that would evolve to become Hawaii Betsuin and Hilo Betsuin. In the ensuing years, propagation efforts continued and when the *vision* for an even larger temple was presented Saiji Kimura "startled everyone with his bold ideas for a future that he saw stretching far beyond the limits of the century then drawing to a close. In 1898, he urged his fellow Shin Buddhists to plan for the next hundred years." "... the Hongwanji mission must plan ahead. We should not be afraid... to make this noble venture a

reality!" and with the help of people like Mary E. Foster, a Hawaiian Buddhist, the new temple would soon become a reality.

In 1899, Reverend Yemyo Imamura, the so-called Father of Hawaii Kyodan, arrived in Hawaii. It was not that everything was smooth sailing for there were huge challenges like a plague that started in China-town and affected many and a huge debt that had already been incurred, but progress was also being made as history tell us for in 1901 Queen Liliuokalani attended a Hongwanji service and the renowned Buddhist Colonel H. S. Olcott *gave* a lecture which boosted the morale of the local membership. In addition to building temples, creating affiliated organizations like the Young Men's Buddhist Association and programs like Sunday School during this time the Hongwanji endeavored to provide assistance to immigrants for adjusting to their new environment by teaching them English, providing education and character building for the children and the "larger community took notice of the positive effects of Buddhist education." In later publications, ministers are given the credit for the role they played in raising the level of culture, outlook and mores of the immigrants. In 1906, came recognition for Hawaii as an independent mission with Betsuin status and an official bishop and in 1907 a Charter of Incorporation was signed. Besides giving credit to all those that helped, the Bishop at the time attributed all success to "the manifestations of the compassion of the Buddha." He also at one point remarked "To think of all those forgetting themselves for the Hongwanji to make today possible, I feel gratitude and am moved deeply even now."

Of particular significance is that in February of 1908, Bishop Imamura organized the first meeting of all Hongwanji ministers from throughout the Territory of Hawaii and this body is recognized as the forerunner of today's Giseikai or Legislative Assembly. The Legislative Assembly, as we know it today, formally began in 1923 with the addition of lay leaders. However, a grand *event* which should not be forgotten was the ground breaking ceremony in 1916 and the Dedication Ceremony in 1918 for the temple with a twenty foot high white dome and the interview in which the Bishop remarked "The true religion ought to rise above and be applicable to any country and nationality and so assimilate with every state and nation. The final object of the Hongwanji mission's idea is to plant the gospel of Buddha Amida in the true spirit of

every nation in every corner of the world. Whether this dreamlike ideal may be attained or not, the untiring efforts during the past, the present and the future of Hongwanji missions in the United States and in other countries of the globe will prove."

In the 1920's, the need to offer the Dharma in English became apparent and in 1921 an English Department was established and familiar names from this period include Ernest and Dorothy Hunt and M.T. Kirby. In 1924, the first Buddhist gathas in English were written and published in a service book in Hilo. Meanwhile in Honolulu, choir singing had its beginnings. As early as the mid-1920's, the Fujinkai/BWA was already providing scholarships to both male and female minister aspirants. In the early 1930's even in the Honolulu area alone it is said that 1000 children were enrolled in Sunday school. However, unexpectedly in 1932, Bishop Yemyo Imamura passed away. The person that Hawaii Kyodan had so heavily relied on for leadership was no more and with the depression came financial difficulties to support programs. Times were hard, but in 1938 Hawaii welcomed some minister scholars who could speak English and together with the work of local ministers left their mark. In the same year, there was a Pan-Buddhist Buddha Day Service that was held at Kapiolani Park and a crowd of 12,000 Buddhists is said to have attended.

However, as the 1930's gave way to the 1940's, grave changes were beginning to take place in the world with World War II. The 33<sup>rd</sup> Legislative Assembly "issued a formal statement pledging their respect for, confidence in, and loyalty to the government of the United States, and their commitment to being law-abiding citizens of the Territory of Hawaii." Regardless, on the night of December 7th, the Bishop and several ministers were forced at bayonet-point to go with soldiers. Later, many more ministers and families along with others would be interned. Anti-Japanese sentiment was high and Buddhism took a hard blow too. Many temples were forced to close their doors, but a few like Hawaii Betsuin and Jikoen Hongwanji managed to keep their doors open during the war years though not without hardship and great perseverance by lay leaders and local born ministers including women ministers who had American citizenship. It was not until the last two months of 1945 that some ministers returned to Hawaii.

After the devastating war years, far reaching changes were in the making for Hawaii Kyodan as Hawaii decided that henceforth they would not rely on Japan to send a bishop, but instead the bishop would be

preferably selected from ministers serving here in Hawaii and a reorganization of the organization was drafted which gave lay leaders more decision making capabilities. In 1948, Hawaii put into office its first elected bishop. In 1949, the establishment of what we know today as Hongwanji Mission School which is the first Buddhist elementary school in the US, the publication of a new gatha book Praises of the Buddha and the visit of Dr. D. T. Suzuki were noteworthy happenings. Beginning in the late 1940's action taken primarily by the Young Buddhist Association members like Mineo Yamagata, Ralph Honda and Sunao Miyabara with the aid of ministers that bore fruit by the next decade, the 50's, was the fact that American soldiers could now be identified as Buddhists with a "B" on their army tags. Also, the symbol of the Dharmachakra was recognized by the military as the symbol of Buddhism and would grace the graves of Buddhist soldiers. It was in 1950, that the Hawaii Delegation presented the idea that the Dharma Wheel to be the international symbol of Buddhism at the World Buddhist Conference held in Burma. Buddhism was now officially recognized by the military and US government. Further, in 1954, the first edition of Shinshu Seiten, Holy Scriptures of Shinshu and an English translation of Shinran Shonin's major work was completed by Professor Kosho Yamamoto. It was also in the 1950's that English became the language of the Legislative Assembly.

In the late 50's and 60's changes in demographics were taking place as people moved to Oahu and the Mainland from the rural communities and the face of Hawaii Betsuin changed accordingly with new residences for the ministers and the Annex Temple Complex for Dharma School services and other uses. A memorable attempt in the 60's was trying to have the State Legislature adopt Buddha Day as a legal state holiday. The bill did not pass, but April 8 is recognized by the State of Hawaii as a holy day in Hawaii (as would Bodhi Day, December 8, later). In the mid-1960's, there was much interest in the Dharma and one result of that aspiration to hear the Teachings was the start of an English radio program. In 1967, the first second-generation Bishop was elected.

In January 1971, an article in the *Star-Bulletin* had the title "Buddhists Add Vitality to Old Truths" and said, "Truth," concluded the news article, "the Buddhists have always claimed, but now action is the new counterbalance." In February 1971, another article in the *Advertiser* with the headline "Buddhism Today ... Enlightened to Youth" said, "They are trying to

respond to the young people in their congregation who question traditional ritualism, urge more social involvement and demand 'relevancy' in their church." The early 1970's saw the beginnings of what would be the Buddhist Study Center, a resource center and place for youth to gather and experience Buddha, Dharma and Sangha. In this period, the first major joint program with the University of Hawaii and the Buddhist community happened with a two month symposium with lectures, panel discussions, and a traveling seminar featuring well-known speakers from around the world. An editorial in the Advertiser commented "In the 85 years since their religion took root here, Hawaii's Buddhists have established a name for themselves synonymous with honesty, resourcefulness, and social concern." The 1975 Legislative Assembly elected Hawaii's first full-time Bishop by distinguishing between the positions of the "Chief Minister" of the Hawaii Betsuin and the "Bishop" of Honpa Hongwanji Mission of Hawaii. This necessitated a new addition to the Pali Highway Complex as a new Headquarters Office was constructed with a conference room and also included a bookstore from which publications by the Buddhist Study Center Press were sold. The Buddhist Study Center played an increasing role in attracting people to Buddhism. The publication of the newsletter *Metta*, which today has world-wide circulation, was initiated. Nembutsu Retreats and Buddhist-Christian dialogue were popular during this period. The prestigious Living Treasures of Hawaii Program had its beginnings in 1976.

In the 1980's, Hawaii Kyodan teamed again with UH to sponsor several major international conferences. The International Association Shin Buddhist Studies also had a conference here in Hawaii. This decade saw the rise of individuals who considered the ministry as a second career after retirement. Throughout the 70's and 80's small groups of younger minister aspirants also emerged who made and continue to make significant contributions. It was in this decade that YESS Camp was established to provide a further opportunity for nurturing our youth. According to the statistical records that we have, our membership peaked in 1985 at 10,581. It was in 1989, that our nationally recognized Project Dana got started. In the year of its Centennial Anniversary, 1989, Dr. Albert Miyasato, President of Hawaii Kyodan said "Shin Buddhism's genesis is indeed Japanese, but it is a universal religion." "For Honpa Hongwanji, the 'temples of Amida's Vow of Great Compassion' the year 1989 celebrated both the end of our first century in Hawaii and the bright

beginning of a new, second century of Shin Buddhism in these islands."

In the 1990's, a major change was the election of the first Hawaii Kyodan President from a Neighbor Island when Fred Nonaka was elected as President. In the 2000's, the first (and only) Legislative Assembly to held outside of Honolulu was held in Hilo on the Big Island of Hawaii. Also, of noteworthy interest is that world peace becomes a major theme and focus for Hawaii Kyodan. Outstanding examples include the founding of the Pacific Buddhist Academy (PBA) the first Shin Buddhist High School in the US with a focus on peace education in 2003, 13<sup>th</sup> World Buddhist Women's Association Convention (2<sup>nd</sup> largest convention ever) hosted by the Hawaii Federation of Buddhist Women's Associations with the theme "May there be peace in the World, may the Buddha's Teaching spread!" in 2006, Hawaii becoming the first State in the Nation to officially observe Peace Day which was established through the efforts of the Hawaii Federation of Jr. Young Buddhist Associations of the Honpa Hongwanji and Shinran Shonin's 750<sup>th</sup> Memorial Observance in Hawaii with the theme "May Peace and Tranquility Prevail Throughout the World" to which the 24<sup>th</sup> Spiritual Leader of the Hongwanji, His Excellency Koshin Ohtani and Lady Noriko Ohtani graced us with their presence in 2009. As part of Hawaii's 750<sup>th</sup> Memorial Observance, Jake Shimabukuro composed a ukulele piece titled *Annan* or "Peace and Tranquility" and a gatha composed in Hawaii called "May Peace Prevail" *even* made its way to the Buddhist Churches of America on the Mainland and Japan. Also, of great significance is Hawaii Kyodan's publically announced support of civil unions and the separation of church and state and increasingly becoming more visible and *involved* with the larger community. If we look at our history, it tell us that community *involvement* being attuned to social issues and concerns in our society and networking with others are important to the vitalization of Hawaii Kyodan and the *value* that people place upon us. In all of this, let the Buddha-Dharma guide us.

Today, we, the Honpa Hongwanji Mission of Hawaii find ourselves at an important juncture in our history. Although there is a continuum *every* so many decades there is a time when the direction and focus of an organization is set. We are at just such a time. *Over* the decades, we *have* discussed many matters, but this time is a time in which taking action is paramount. We must adjust to the circumstances of the times while still attempting to provide guidance to the age



and times. At this 100th Legislative Assembly, we will be watching the documentary film *Aloha Buddha* which captures in film the present situation and timely we are also embarking on the implementation of the Strategic Plan which addresses the challenges and issues facing us as an organization with the aim of revitalization and new growth. Let us keep in mind that there has always been challenges and as we struggle with declining membership, shortage of ministers and limited financial resources, what cannot be understated is the importance of cooperation and our being united in our efforts, ministers and lay, temples in the districts helping each other, Districts and Headquarters, between *Overseas Missions* and even interdenominational between the various sects of Buddhism. For Honpa Hongwanji Mission of Hawaii, an important goal is, while not denying our ethnic beginnings, we are trying to *evolve* into becoming an even more Dharma-centered organization welcoming of all peoples guided and inspired by Amida Buddha's Wisdom and Compassion in which both clergy and lay mutually work together in a partnership of "Temple Effectiveness" resulting in a harmonious community in which there is mutual respect and appreciation and we are focused on listening, receiving and sharing the Nembutsu Dharma. In our

thoughts and *vision*, as the largest denomination of Buddhism in the Isles, we should not be limited to only our denomination's future, but also looking at the future of Buddhism in our entire State of Hawaii. The question to ask is "How can I help?" "What is my role?"

I conclude by asking you to remember our Mission Statement "to share the living Teachings of Jodo Shinshu Buddhism so that all beings may enjoy *lives* of harmony, peace and gratitude" and express the thought let us respond in Joy and Gratitude for Amida Buddha's All-Inclusive Wisdom and Unconditional Compassion for as Shinran Shonin said in "Hymns of the Pure Land", *"I praise Amida's wisdom and virtue, So that beings with mature conditions throughout the ten quarters may hear. Let those who have already realized shinjin (Awakened Mind of True Entrusting) constantly respond in gratitude to the Buddha's benevolence."*

Namo Amida Butsu/I entrust myself to the Buddha of Immeasurable Life and Infinite Light ..

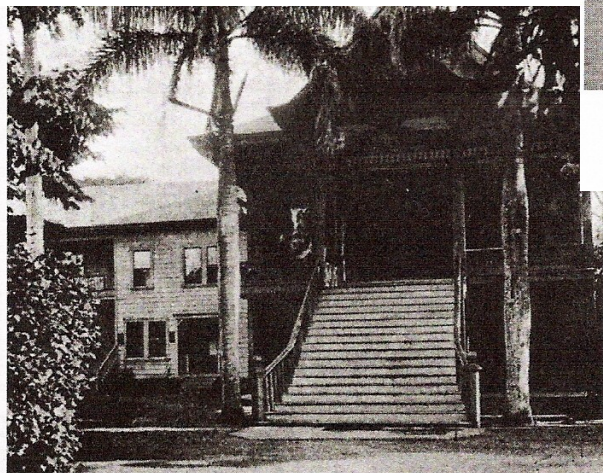
In gassho, Bishop Eric Matsumoto

What year was Hongwanji's first service?

- A. 1886
- B. 1889
- C. 1890



The first ministers meeting



The first Honpa Hongwanji Temple 1899-1918

What is the theme and slogan for 2012?

- A. Path of Entrusting—Seek Truth
- B. Path of Entrusting—Listen & Reflect
- C. Path of Entrusting—Recite the Nembutsu

# THE 100th GISEIKAI

## THE 100th GISEIKAI

On February 3-4, 2012, Honpa Hongwanji Mission of Hawaii's 100th Giseikai (Legislative Assembly) was held at Honpa Hongwanji Hawaii Betsuin.

## RESOLUTIONS

The following resolutions were discussed.

### 1. Budget for 2012 :

The total budget for 2012 is \$1,250,414.00 and the net assessment is \$884,104.00. Assessment proration to each district is as follows:

Honolulu	\$263,463.00 (29.80%)
Oahu	\$167,980.00 (19.00%)
Kauai	\$75,149.00 (8.50%)
Maui	\$148,529.00 (16.80%)
Hawaii	\$228,983.00 (25.90%)
Total	\$884,104.00 (100.00%)

### 2. Appreciation to Noboru Taketa

### 3. Group life insurance for ministers and lay employees

### 4. Adopting a standardized compensation and benefits for Hawaii Kyodan ministers

### 5. Membership crisis

### 6. Appreciation and Condolence Mr. Andrew Hisao Fukuoka

### 7. Appreciation and Condolence Mr. James Iha

### 8. Appreciation and Condolence Mr. Takeshi Fujita

## NEW OFFICERS, DIRECTORS, AND ADVISORS FOR 2012

The following people were installed as the Officers, Directors, and Advisors of Honpa Hongwanji Mission of Hawaii by Bishop Eric Matsumoto on February 4, 2012.

## OFFICERS:

President: Alton Miyamoto, Kauai

Immediate Past President:

Frederick S. Nonaka, Hawaii

Vice Presidents:

Blayne Higa, Honolulu

Robert Asato, Oahu

Wayne Fujioka, Kauai

Sylvia Ishikawa, Maui

Rowan Matsumoto, Hawaii

Secretary: Warren Tamamoto, Oahu

Assistant Secretary: Carol Yamamura, Maui

Treasurer: John Toguchi, Honolulu

Assistant Treasurer: Jerry Tamamoto, Honolulu

## DIRECTORS:

Norman Hirohata-Goto (H), Masuo Kino (H), Joel Determan (H), Daikichi "Bob" Nishita (H), Wayne Y. Yoshioka (H), Yukio Kitagawa (O), Carolyn Uchiyama (O), Alwyn Kakuda (K), Sherman Thompson (M), Carol Yamamura (M), Guy Hironaka (M), Richard Onishi (HI), Linda Nagai (HI), Miles Okumura (HI), Gordon Heit (HI), Helen Shiota-Benevides (HI)

## ADVISORS:

Roy Miyamoto (H), Rose Nakamura (H), Keiji Kukino (H), Rev. Chikai Yosemori (H), George Otani (O), Gordon Watanabe (O), Milton Nakamura (K), S. Stanley Okamoto (M), Gordon Cockett (M), Barry Taniguchi (HI), Richard Fujii (HI), Barry Mizuno (HI)

## HONORARY:

Edward Fujimori (H), Makoto Kunimune (H), Richard Zukemura (H)

## ADVISORS:

Yoshio Iwai (O), Teruo Morigaki (HI)

## SANMU:

Rev. Tatsuo Muneto,  
Rev. Bruce Nakamura,  
Rev. Kevin Kuniyuki,  
Rev. Shinkai Murakami,  
Rev. Jay Okamoto

## KANJI:

Rev. Bert Sumikawa (H),  
Rev. Shinkai Murakami (M),  
Rev. Jay Okamoto (O),  
Rev. Kazunori Takahashi (K),  
Rev. Bruce Nakamura (HI)



# THE 100th GISEIKAI



Upon approval of the resolution of appreciation to Noboru Taketa, Mr. Noboru Taketa was recognized for his devotion and commitment to the sharing of the Buddha Dharma with our community via media. Feb 4, 2012



2012 HHMH Board of Directors



Recognition of retirement at Aloha Luncheon  
Rev. & Mrs. Ryoso Toshima served HHMH for 39 years.  
Rev. & Mrs. Thomas Okano served HHMH for 43 years.



2012 Living Treasures of Hawaii  
(from left) Gordon Mark, Ben Finney, Lynette Paglinawan, Barbara Kawakami, and Goro Arakawa

Photos taken by Mr. Alan Kubota

## Wahiawa Hongwanji Sunday Service Schedule

### March

- 4 – No service – Oahu District Sangha Day at Halawa District Park, Pacific Buddhist Academy Taiko presentation at Pearl City Cultural Center
- 11 – Spring Ohigan with Rev. Kojun Hashimoto from Kauai
- 18 – Juliet Kono Lee – Big Island native, English instructor at Leeward Community College, and author of the latest book, “Anshu.”
- 25 – Roy Higa will share his experiences traveling in India – Shakyamuni Buddha’s birthplace

### April

- 1 – Hanamatsuri service presented by the Dharma school students
- 8 – Buddha Day by the Hawaii Buddhist Council
- 15 – Carrie Kawamoto sharing about her journey on the Buddhist path
- 22 – Blayne Higa from Mo`iliili Hongwanji is working for his Tokudo ordination
- 29 – Eshinni Day presented by the BWA

# Dharma School News

By Carolyn Uchiyama

## **Wahiawa Hongwanji Dharma School Scholarship**

On February 5<sup>th</sup>, the WHM Dharma School Scholarships will be available for any senior graduating in May. The eligibility criteria are that the student will: graduate at the end of the school year; further his/her education beyond high school; and have a family member hold membership at the Wahiawa Hongwanji Mission.

The scholarship applications are available in the temple office between the hours of 8:00 – 12:00 Monday through Friday. You may also receive them from a dharma schoolteacher or after services on Sunday.

**The deadline for scholarship applications is April 1, 2012.**

## **Wisdom and Compassion at the End of Life: A Buddhist Symposium**

March 9 – 10, 2012 at Honpa Hongwanji Hawaii Betsuin Annex Temple

How can we face the death of a loved one? How does understanding dying help those who must care for their elders and those who have lost loved ones? What are some Buddhist approaches and practices to deal with these most trying times?

These questions will be answered at the symposium. The special speaker will be Dr. Carl Becker, professor at Kyoto University Graduate School, Kokoro Research Center and Department of Human and Environmental Studies. Besides giving the keynote presentation, Dr. Becker will lead a panel of Theravadan, Tibetan, Chinese, and Japanese traditions. Saturday breakout sessions will cover various topics such as hospice care, palliative care, bereavement, advanced care planning and health directives, and current programs for compassionate care.

Registration flyers are available at the temple office. The fee is \$30.00 for the workshop, materials, refreshments, and lunch. Make checks payable to the Buddhist Study Center and mail registration to Buddhist Study Center, 1436 University Avenue, Honolulu, HI 96822.

**Deadline is March 5, 2012.**

## **Spring Workshop – April 14, 2012**

The Oahu District Council is presenting a workshop at Mililani Hongwanji entitled “Occupy My Bonbu.” It is an experiential/interactive workshop on Living a Life of Gratitude in Jodo Shinshu Buddhism. The group has been meeting and working to gather materials for this workshop. They may even have scientific data to show how gratitude helps us physically, mentally, emotionally, and spiritually. Registration flyers are available at the temple office. The fee is \$15 for the workshop, materials, refreshments & lunch. Make checks payable to Oahu District Council and mail registration to Mililani Hongwanji, P.O. Box 893308, Mililani, HI 96789.

**Deadline is April 2, 2012.**

## **ANNOUNCEMENTS**

### **St. Stephen's Food Pantry:**

We will collect food on the first Sunday of the month – March 11. Thank you for the February food collection. We collected quite a lot of food for the Pantry. Your continued support is greatly appreciated.

### **Dharma School :**

We will have Dharma school on March 4 and 25. Students will be practicing for the Hanamatsuri service in April and getting their posters ready for the DSTO poster contest due in March.

The Dharma School teachers have teamed with Terry Jean Arakaki to put on Family activity days 4 times a year. Last December we helped Terry Jean put on a gingerbread making afternoon that entailed creating, baking and decorating gingerbread items. We will inform you of activities that will be coming up.





KADOMATSU  
IN THE MAKING , BY HAPPY VOLUNTEERS

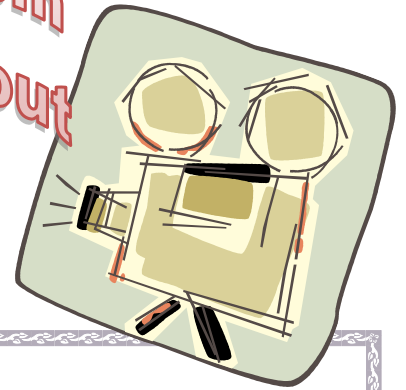


Answer to quiz on page 7.  
1- B 2- C

## Notice

Did you know that you can view your newsletter very easily if you have a computer and can access the internet. Just go to webpage: <http://wahiawashinbuddhists.org/index.html> and click on to Newsletter. It is also very handy if you are traveling, and wish to stay up to-date with the temple's news. You will find other useful information about the temple, its members and activities.

Movie Night... February 24 @ 6pm  
please come and enjoy a night out  
with Movie and Dinner



### **Kinoko Mushroom Rice -Elaine Kawamoto's Version**

2 regular cups white rice

2 regular cups mochi rice

**\*2-4 cups water**

1 pkg. Kinokokamameshi No Moto with the liquid and enclosed soup base

1 can Ajitsuke clams

1 packet Shiitake Dashi-No-Moto

Wash rice. Add mushrooms with the liquid and soup base. Add clams and its liquid, and the Shiitake dashi-no-moto to the rice. Mix well and cook in rice cooker as usual.

\*Depending on the brand of Kinokokamameshi No Moto you buy, some say use the liquid the mushrooms comes in and other brands say drain the liquid. You want **4 cups of water or liquid** to cook the rice.

**Kinokokamameshi No Moto**

**Exported by Kawa Corporation 7 oz. (200g.)**

#### **Directions per package:**

1. Wash 3 Japanese cups of rice.
2. Add rice & 1 cup (240 ml.) water into rice cooker.
3. Add in Kinoko Mushroom with liquid & soup base.
4. Mix well & cook rice as usual.

#### **Please Note:**

If you have a favorite recipe that you would like to share, please e-mail it to:  
[news@wahiawahongwanji.org](mailto:news@wahiawahongwanji.org).  
Thank you for sharing.



## Pacific Buddhist Academy

*Leadership...Intellect...Spirit...in the Service of Peace*



PACIFIC BUDDHIST ACADEMY

**Date:** Sunday, March 4, 2012

**Time:** 2:00pm

**Place:** Pearl City Cultural Center  
2100 Hookiekie Street

**Cost:** \$15.00 (General)  
\$12.00 (Senior 65+)  
\$20.00 (At the Door)

## 6th Annual Taiko Festival

### *Lessons of the Bamboo*



Tickets available online at [www.brownpapertickets.com](http://www.brownpapertickets.com) or at the school office

Festival sponsorships available at Bronze (\$500+), Silver (\$1,000+) and Gold (\$5,000+) levels

*Enjoy the sights and sounds of the ancient art of Taiko*

*performed by the students of the Pacific Buddhist Academy*

*under the direction of Sensei Jay Toyofuku.*

*Also featuring special guest Ron Miyashiro and performances*

*by Hongwanji Mission School students and 2011 KZOO Radio*

*Karaoke Grand Champion Tevita Apina and friends.*

### **Pacific Buddhist Academy**

1710 Pali Highway  
Honolulu, HI 96813

Phone: 808-532-2649

Fax: 808-522-7395

E-Mail: [info@pbahi.org](mailto:info@pbahi.org)

[www.pacificbuddhistacademy.org](http://www.pacificbuddhistacademy.org)



# OCCUPY MY BONBU

## An Experiential/Interactive Workshop on Living a Life of Gratitude in Jodo Shinshu Buddhism



Saturday, April 14, 2012, 9 a.m. to 12 noon  
At: Mililani Hongwanji Buddhist Temple  
95-257 Kaloapau Street  
Mililani, HI

Seminar presented by Oahu District Council

\$15 for the Workshop, Materials, Refreshments & Lunch

Deadline for registration April 2, 2012

Please make checks payable to Oahu District Council

Mail registrations to Mililani Hongwanji Buddhist Temple, P.O. Box 893308,  
Mililani, HI 96789

Questions? Need more information? Please call Mel Hayase,  
623-0330 or 258-6192

Or email; [bondanceman@hotmail.com](mailto:bondanceman@hotmail.com)

---

### REGISTRATION FORM

NAME \_\_\_\_\_

CONTACT INFO: e-mail: \_\_\_\_\_ phone (Home): \_\_\_\_\_ cell: \_\_\_\_\_

Temple Affiliation: \_\_\_\_\_



# WHM CALENDAR MARCH 2012

Sun	Mon	Tue	Wed	Thu	Fri	Sat
				1	2 7pm- Advanced Meditation	3
4 No Service at WHM 9am-Oahu District-Sangha Day-Host Aiea 10am-2pm BWA NY Party	5	6	7 7pm- Dharma Mtg. BWA Rm.	8 7:30am-Hosha 7pm-Club Asoka Mtg. BWA Rm.	9	10 9am-Altar Aware- ness
11 8:30am- Ohigan Japanese 10am-Ohigan English w/ Rev Kojun Hashimoto	12	13	14	15 11am-Hospital Visi- tation (PD)	16 7pm- Advanced Meditation	17 5pm-Marcus Oshiro-Talk Story
18 9am-Sunday Service Spk. Juliet Kono Lee 10am-BWA Meeting	19	20	21	22 7:30am-Hosha	23 6pm-Movie Night	24
25 9am-Sunday Service Spk. Roy Higa 10am-Board Meeting	26	27	28	29	30	31

Wahiawa Hongwanji Mission  
 1067 California Avenue  
 P.O. Box 860265  
 Wahiawa, HI 96786-0265  
**Return Service Requested**

Non-Profit Organization  
 U.S. POSTAGE  
**PAID**  
 WAHIAWA, HI  
 PERMIT NO 24

**Wahiawa Hongwanji Mission**

**April 2012**

<b>Sun</b>	<b>Mon</b>	<b>Tue</b>	<b>Wed</b>	<b>Thu</b>	<b>Fri</b>	<b>Sat</b>
1 9am- Hanamatsuri service 10-New Member Orientation 1-3pm-Obon Practice	2	3	4 7pm- Dharma Mtg.	5 7:30am-Hosha	6 7pm- Ad- vanced Meditation	7
8 Buddha Day Service 1-3pm-Obon Practice	9	10	11	12 7pm-Club Asoka	13	14 Gratitude Seminar @ Mililani
15 9am-Sunday Service Spk. Carrie Kawamoto 1-3pm-Obon Practice	16	17	18	19 7:30am-Hosha	20 7pm- Ad- vanced Meditation	21 7-1pm District BWA Seminar
22 9am-Sunday Service Spk. Blayne Higa 1-3pm-Obon Practice	23	24	25	26	27 6pm-Movie	28
29 9am-Eshinni Day 1-3pm-Obon Practice	30					